



**API-6D MONOGRAMMED THRU
CONDUIT EXPANDING GATE VALVE**



VITAS



QuarterTurn
RESOURCES INC.





PART OF THE VALVITALIA GROUP

VALVITALIA is a World Wide manufacturer of valves and related products to the oil, gas and power industries. As an innovative supplier VALVITALIA offers an array of high quality competitively priced products and services.





QuarterTurn

RESOURCES INC.

The logo graphic for QuarterTurn Resources Inc. consists of several curved, parallel lines in a teal color, resembling a stylized 'Q' or a series of concentric arcs.

QUARTER TURN RESOURCES (QTR) is the exclusive North American Master Distributor for VALVITALIA. We are a major supplier to most companies in the oil and gas industry. With our 40 plus years of experience, we offer our customers many advantages over our competitors which include:

- Three facilities: Two in Ponca City, OK and one in Deer Park, TX
- Large inventory provides for exceptional delivery time
- Full fabrication and coating facilities for standard, below grade and custom applications
- In house automation and controls





FEATURES OF THE VITAS EXPANDING GATE VALVES

Intrinsically Fire Safe Design

Fully Piggable

Mechanical positive sealing

Easy maintainability, inline (Top Entry)

Double Block & Bleed

Double redundant sealing

Suitable for all types of services

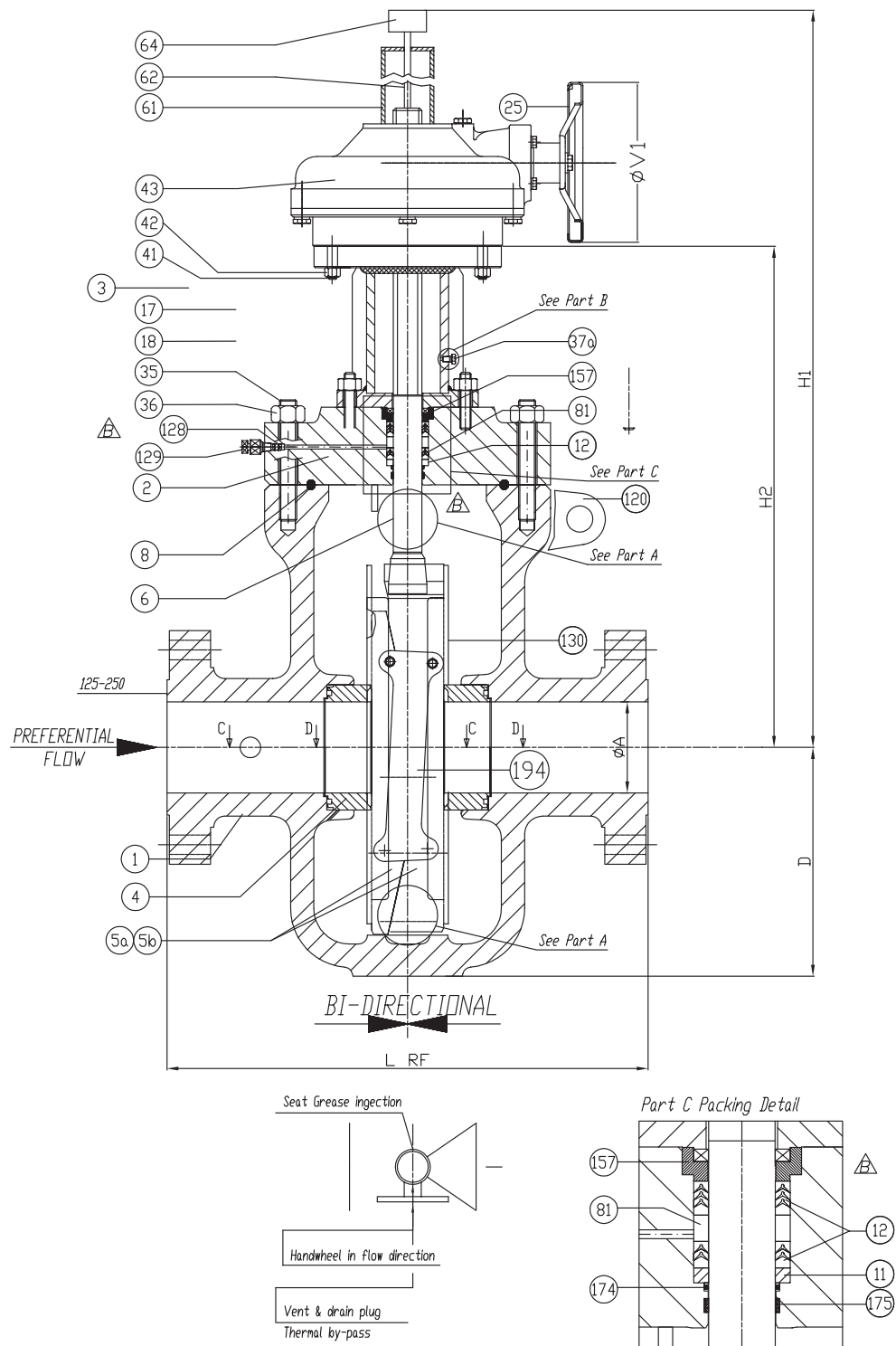
Robust and long lasting construction

NACE Compliant MR-01-75

SPECIFICATIONS

MODEL VTS14-75

Size Range	4" thru 12"
Cast Carbon Steel Construction	Standard-A216 WCC
Gate Materials of Construction	A-350-LF2
Stem Materials of Construction	17-4PH
Stem Packing	PTFE Chevron Type
Gear Operated	Standard
Full Port-Full Open	Standard
ANSI end to end	Standard
Flanged End Connections	Standard
API-6D manufactured, tested and monogrammed	Standard
Fire Safe design to API-607/6Fa (BS6755 Pt.2)	Standard
Standard Operating Temperatures	-20 deg F to 350 deg F



MATERIALS OF CONSTRUCTION

1	BODY	ASTM A 216 Gr. WCC
2	BONNET	ASTM A 216 Gr. WCC / A 105
3	YOKE	ASTM A 105+A 106
4	SEAT	ASTM A 350 LF2 + RTFE insert + 0.003" ENP
5a	FEMALE EXPANDING GATE	ASTM A 350 LF2 + 0.003" ENP
5b	MALE EXPANDING GATE	ASTM A 350 LF2 + 0.003" ENP
6	STEM	17-4-PH
8	BONNET GASKET	RTJ SOFT IRON
11	BOTTOM RING	ASTN A479 316
12	PACKING	PTFE chevron type
17	YOKE STUD BOLTS	ASTM A193 B7M
18	YOKE NUTS	ASTM A 194 2HM
25	HANDWHEEL	Carbon steel or Cast Iron
35	BONNET STUD BOLTS	ASTM A193 B7M
36	BONNET NUTS	ASTM A 194 2HM
37	PLUG	AISI 316
37a	BLEED PLUG	AISI 316
41	FLANGE BOLTS	ASTM A193 B7M
42	FLANGE NUTS	ASTM A 194 2HM
43	BEVEL GEAR	COMMERCIAL
61	STEM PROTECTION	ASTM A 106
62	ROD BAR	AISI 316
64	INDEX	NYLON
81	LANTERN	ASTN A479 316 or 410
120	LIFTING	INTEGRAL
128	CHECK VALVE	AISI 316
129	GREASE INJECTOR	AISI 316
130	SEAT SKIRT	A36 (zinc plated) or ENP
136	SEAT SEAL O-RING	VITON
157	BUSHING+F.S. STEM GASKET	AISI 316 + Graphite
174	LIP SEAL	ELGILOY+PTFE With additive fiber
175	STEM GUIDE	PTFE Modified or PEEK
194	DRAGGER PLATE	UNS S41000

△ Fire Safe Design
 △ - Material according to NACE MR-01-75

Size	A	D	C Travel	H1	H2	LBW-LRF	V1	Weigh RF lbs
4"	102	245	115	740	474	432	457	443
	4"	9.65"	4.53"	29.13"	18.66"	17"	17.99"	
6"	152	325	162	970	650	559	457	794
	6"	12.8"	6.38"	38.19"	25.59"	22"	17.99"	
8"	203	463	228	1402	957	660	457	1500
	8"	18.23"	8.98"	55.2"	37.68"	26"	17.99"	
10"	254	560	279	1550	1007	787	610	2028
	10"	22.05"	10.98"	61.03"	39.65"	31"	24.02"	
12"	305	639	331	1730	1165	838	710	3153
	12"	25.16"	13.03"	68.11"	45.87"	33"	27.95"	

Marking according to MSS-SP-25
 Design according to API 6D - ASME B16.34
 End to end according to API 6D - ASME B16.10
 Flange from 2" to 24" according to ANSI B 16.5
 Flange 26" and larger by customer*s request



CERTIFIED DRAWING

TYPE VALVE THROUGH CONDUIT DOUBLE EXP. GATE
 CLASS 600

QuarterTurn

RESOURCES INC.



ADDITIONAL PRODUCTS

QUARTER TURN RESOURCES ALSO SELLS AND STOCKS OTHER VALVE TYPES WHICH INCLUDE:

- **DELTA TRUNNION MOUNTED BALL VALVES**
- **VITAS FULL OPEN SWING CHECK VALVES**
- **DELTA LUBRICATED PLUG VALVE**



**3505 W. North Avenue
P.O. Box 1455
Ponca City, OK 74601**

**714 West 13th Street
Deer Park, TX 77536**

**Toll Free: 1-866-765-0183
Phone: 1-580-765-0183
Fax: 1-580-765-0182**

**E-mail: sales@qtrinc.biz
Website: www.qtrinc.biz**

REPRESENTATIVE