



Systems, Inc.

Series WFD726 Regulated Instrument Gas Supply System

OPERATIONAL PRINCIPLE

Pipeline natural gas at high pressure enters the IMAC Series WFD726 inlet. The WFD726 utilizes two filter dryer assemblies in parallel for maximum moisture, debris, or other contaminant removal. The gas supply exits the dual filter dryers and enters the first stage of heating using a catalytic coil heat source. When the gas exits the heater assembly, it splits and runs through dual high pressure gas regulators that performs two pressure cuts. This lower pressure gas enters the second pass of the catalytic assembly for further heating of the gas. The natural gas goes from the catalytic heater to the regulated outlet that provides conditioned gas for instruments and controls.

The Series WFD726 makes use of a radiated heat source in order to minimize Joules-Thompson cooling effect that is associated with high pressure reduction of natural gas. This temperature reduction can lead to freezing problems and hydrate formation with the regulators. The Series WFD726 also incorporates a rugged, aluminum stand for secure mounting and a drain valve for discarding of any moisture collection.



FEATURES OF MERIT

- Rugged, compact design for easy installation
- Dual Pass Catalytic Coil Heater
- Drain Valve
- Various types of filtration media available (application dependent)
- Filtration replacement without interruption of service
- Designed with overpressure protection for downstream equipment
- Indicator gauge for visual monitoring of pressure to controls
- Redundant 3-micron filtration with dual controlled pressure regulation



TECHNICAL SPECIFICATIONS

Connection Size

- 1/4" NPT (other sizes available)

Maximum Inlet Pressure

- 1500 PSIG

Materials of Construction

- Carbon Steel Filter Body
- Stainless Steel Tubing & Fittings
- Viton Seals (other seal material available)

Temperature Ratings

- -40 F TO 225 F (+107 C)

FLOW RATES

- UP TO 50 SCFM (3000 SCFH)

Catalytic Heater

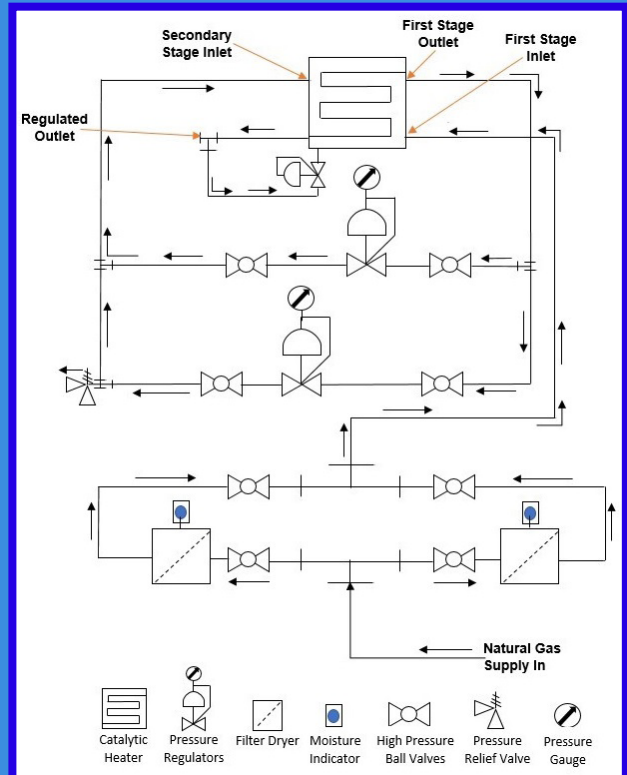
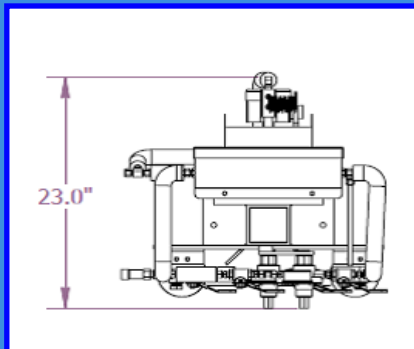
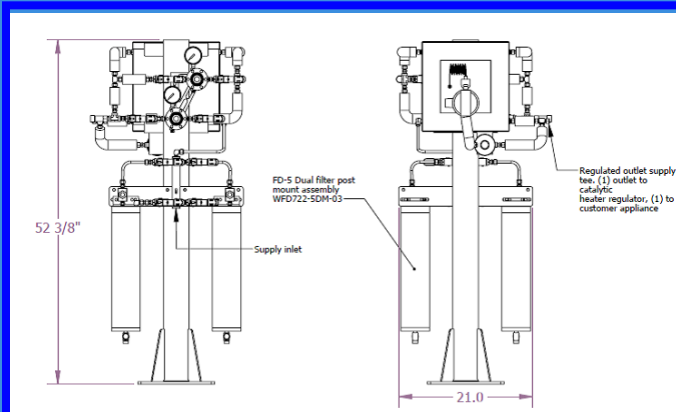
- Explosion-proof design
- 8" Heater Core
- Stainless Steel Construction
- FM Approved
- Dual Pass Design

Other Special Standards

- Severe Service Gauges
- Tattle-Tail Moisture Indicators
- Drip Pot Assembly

DIMENSIONS

SERIES WFD726 P&ID



90 Main Street, P.O. Box 1605
Tullytown, PA 19007
www.imacsystems.com
sales@imacsystems.com

1-800-955-4GAS
Phone: (215) 946-2200
Fax: (215) 943-2984